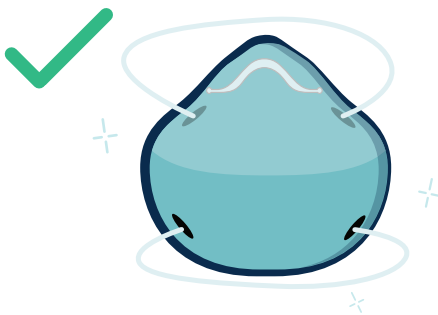


Visitor Masking Guidelines

ECU Health values family and community presence when loved ones are in our facilities. At the same time, ECU Health is responsible for protecting patients and team members from being exposed to infectious viruses.

To ensure the safety of all, visitors may be screened, will be masked and asked to follow the masking guidelines below:

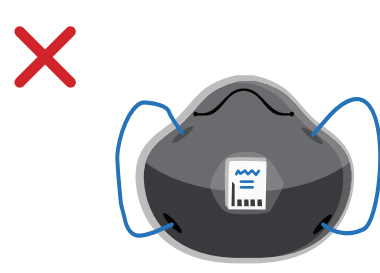
- Masks are required for all visitors. Visitors must wear surgical masks provided at screening stations or personal N95/KN95 masks as long as they are clean, intact, without a valve and have no visible gaps.
- Visitors may not wear personal cloth masks, bandanas, gaiters, visibly soiled masks and masks with valves.
- Masks must be worn over the mouth and nose and secured under the chin.
- Visitors are required to wear a mask at all times and are not allowed to remain in the hospital or clinic without one.
- Upon exiting the facility, please remove mask by only touching ear loops.



N95/KN95 Mask



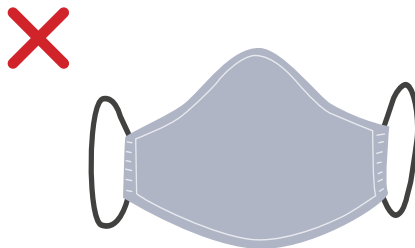
ECU Health Surgical Mask



Mask with Valve



Bandana Mask



Cloth Mask



Gaiter Style Mask

For more information on proper masking guidelines, visit the CDC website.